

# [ 1 - BEDROOM ]

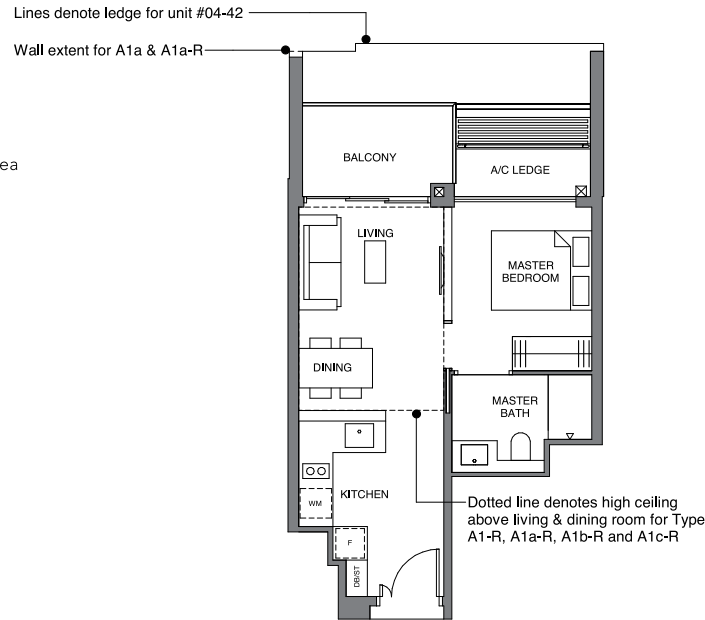
**TYPE A1**  
44 sqm | 474 sq ft

**BLOCK 32**  
#02-33 to #11-33

**TYPE A1-R**  
56 sqm | 603 sq ft

Incl. of 12 sq m | 129 sq ft of void area  
(high ceiling) above living & dining

**BLOCK 32**  
#12-33



**TYPE A1a**  
44 sqm | 474 sq ft

**BLOCK 32**  
#02-25\* to #11-25\*

**BLOCK 34**  
#04-42 to #11-42

**TYPE A1a-R**  
56 sqm | 603 sq ft

Incl. of 12 sq m | 129 sq ft of void area  
(high ceiling) above living & dining

**BLOCK 32**  
#12-25\*

**BLOCK 34**  
#12-42

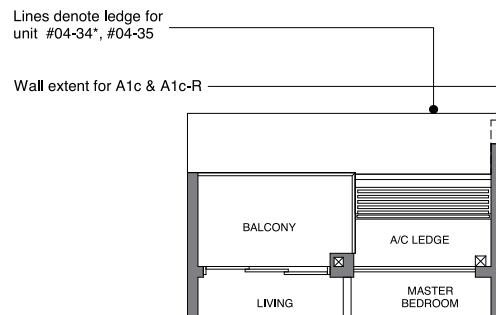
**TYPE A1b**  
44 sqm | 474 sq ft

**BLOCK 34**  
#04-35 to #11-35

**TYPE A1b-R**  
56 sqm | 603 sq ft

Incl. of 12 sq m | 129 sq ft of void area  
(high ceiling) above living & dining

**BLOCK 34**  
#12-35



**TYPE A1c**  
44 sqm | 474 sq ft

**BLOCK 34**  
#04-34\* to #11-34\*

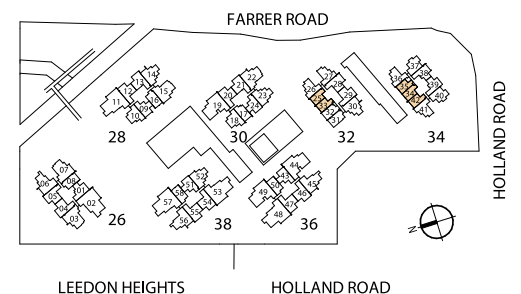
**TYPE A1c-R**  
56 sqm | 603 sq ft

Incl. of 12 sq m / 129 sq ft of void area  
(high ceiling) above living & dining

**BLOCK 34**  
#12-34\*

DB/ST: Distribution Board / Storage  
F: Fridge  
WM: Washer Cum Dryer  
\* Denotes mirror image

Area includes PES, A/C ledge, balcony and void area (high ceiling). The plans are subject to change as may be required or approved by the relevant authorities. Areas are approximate measurements only and are subject to final survey. Plans are not drawn to scale and do not form part of the contract.



# [ 1 - BEDROOM + STUDY ]



**TYPE AS1**  
50 sqm | 538 sq ft

BLOCK 26  
#02-08 to #12-08

BLOCK 28  
#03-16 to #11-16

**TYPE AS1-R**  
63 sqm | 678 sq ft

Incl. of 13 sq m | 140 sq ft of void area  
(high ceiling) above living & dining

BLOCK 28  
#12-16

**TYPE AS1a**  
50 sqm | 538 sq ft

BLOCK 38  
#01-58 to #12-58

**TYPE AS1b**  
50 sqm | 538 sq ft

BLOCK 36  
#01-50 to #12-50

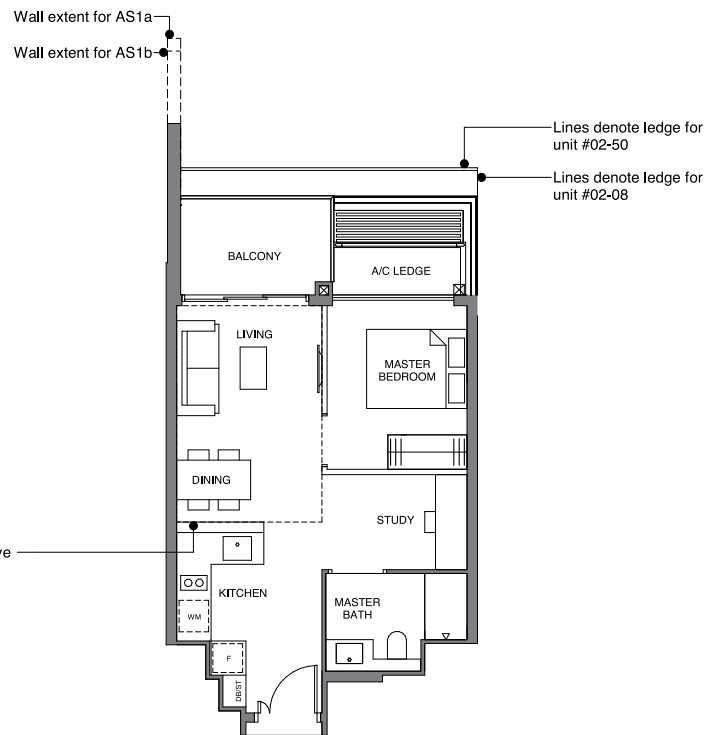
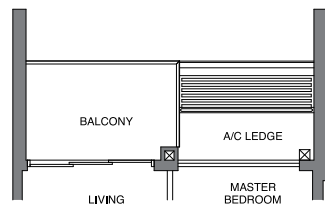
**TYPE AS1c**  
50 sqm | 538 sq ft

BLOCK 30  
#02-17\* to #11-17\*

**TYPE AS1c-R**  
63 sqm | 678 sq ft

Incl. of 13 sq m | 140 sq ft of void area  
(high ceiling) above living & dining

BLOCK 30  
#12-17\*



Dotted line denotes high ceiling above living & dining room for Type AS1-R, AS1c-R and AS1d-R

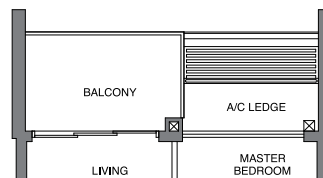
**TYPE AS1d**  
50 sqm | 538 sq ft

BLOCK 32  
#02-32 to #11-32

**TYPE AS1d-R**  
63 sqm | 678 sq ft

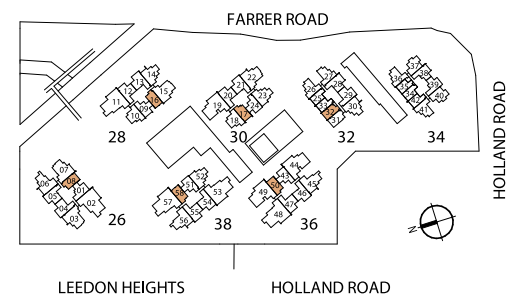
Incl. of 13 sq m | 140 sq ft of void area  
(high ceiling) above living & dining

BLOCK 32  
#12-32



DB/ST: Distribution Board / Storage  
F: Fridge  
WM: Washer Cum Dryer  
\* Denotes mirror image

Area includes PES, A/C ledge, balcony and void area (high ceiling). The plans are subject to change as may be required or approved by the relevant authorities. Areas are approximate measurements only and are subject to final survey. Plans are not drawn to scale and do not form part of the contract.



# [ 1 - BEDROOM + STUDY ]

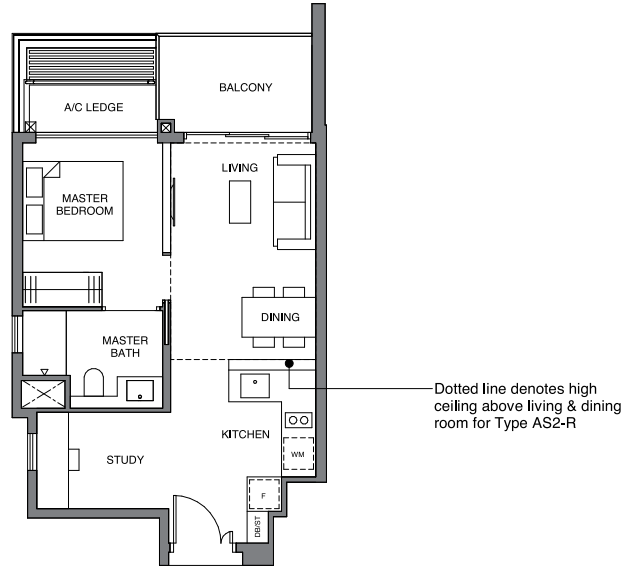
**TYPE AS2**  
50 sqm | 538 sq ft

**BLOCK 32**  
#02-31 to #11-31

**TYPE AS2-R**  
63 sqm | 678 sq ft

Incl. of 13 sq m | 140 sq ft of void area  
(high ceiling) above living & dining

**BLOCK 32**  
#12-31



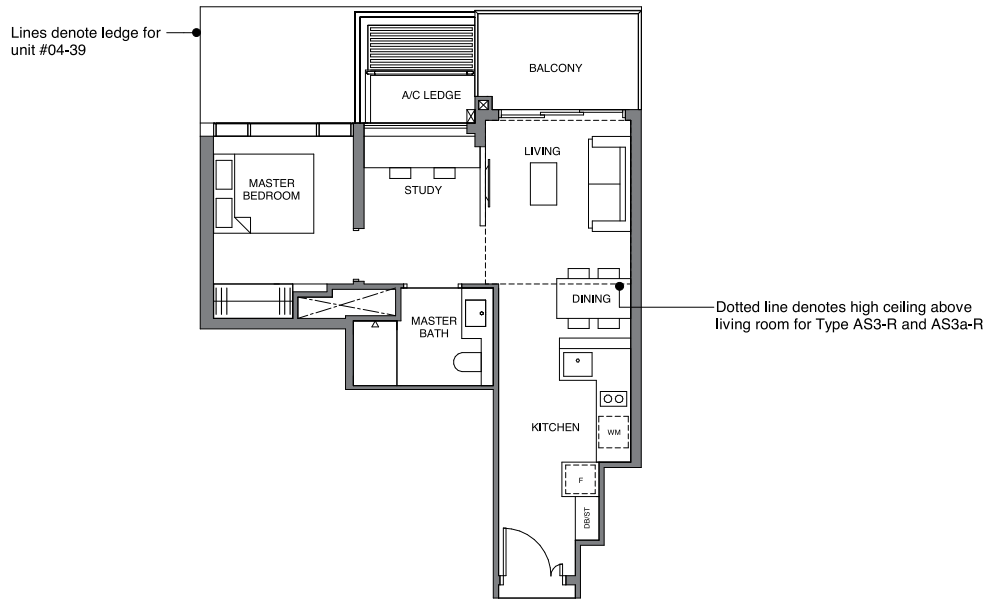
**TYPE AS3**  
54 sqm | 581 sq ft

**BLOCK 34**  
#04-39 to #11-39

**TYPE AS3-R**  
64 sqm | 689 sq ft

Incl. of 10 sq m | 108 sq ft of void area  
(high ceiling) above living

**BLOCK 34**  
#12-39



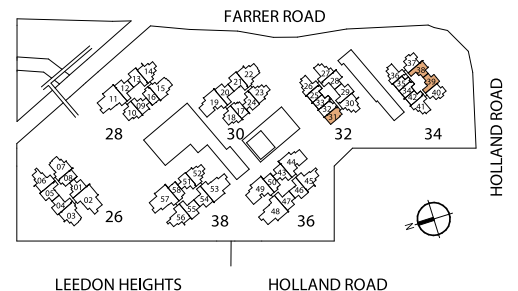
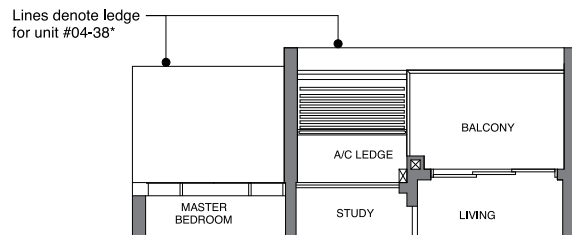
**TYPE AS3a**  
54 sqm | 581 sq ft

**BLOCK 34**  
#04-38\* to #11-38\*

**TYPE AS3a-R**  
64 sqm | 689 sq ft

Incl. of 10 sq m | 108 sq ft of void area  
(high ceiling) above living

**BLOCK 34**  
#12-38\*



DB/ST: Distribution Board / Storage  
F: Fridge  
WM: Washer Cum Dryer  
\* Denotes mirror image

Area includes PES, A/C ledge, balcony and void area (high ceiling). The plans are subject to change as may be required or approved by the relevant authorities. Areas are approximate measurements only and are subject to final survey. Plans are not drawn to scale and do not form part of the contract.